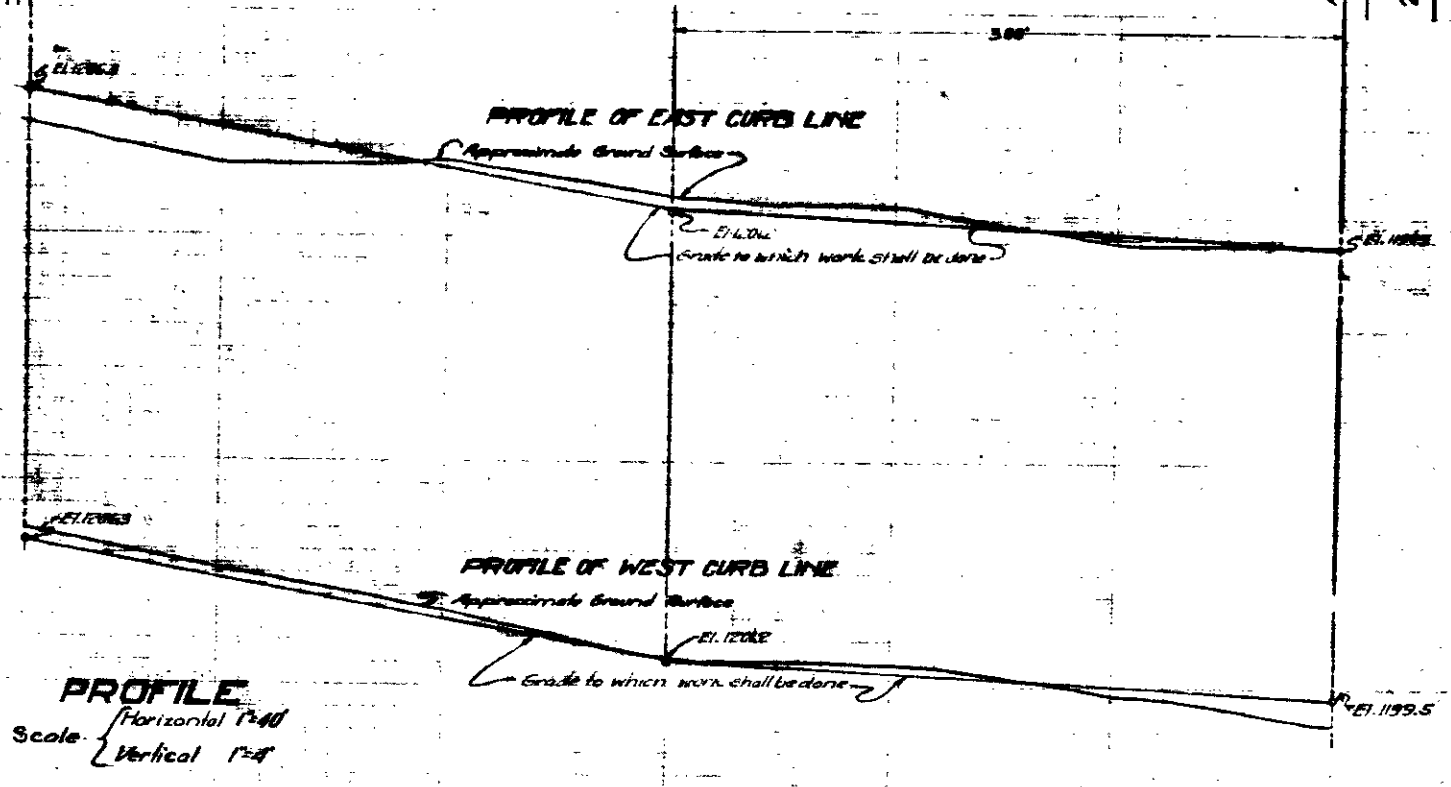
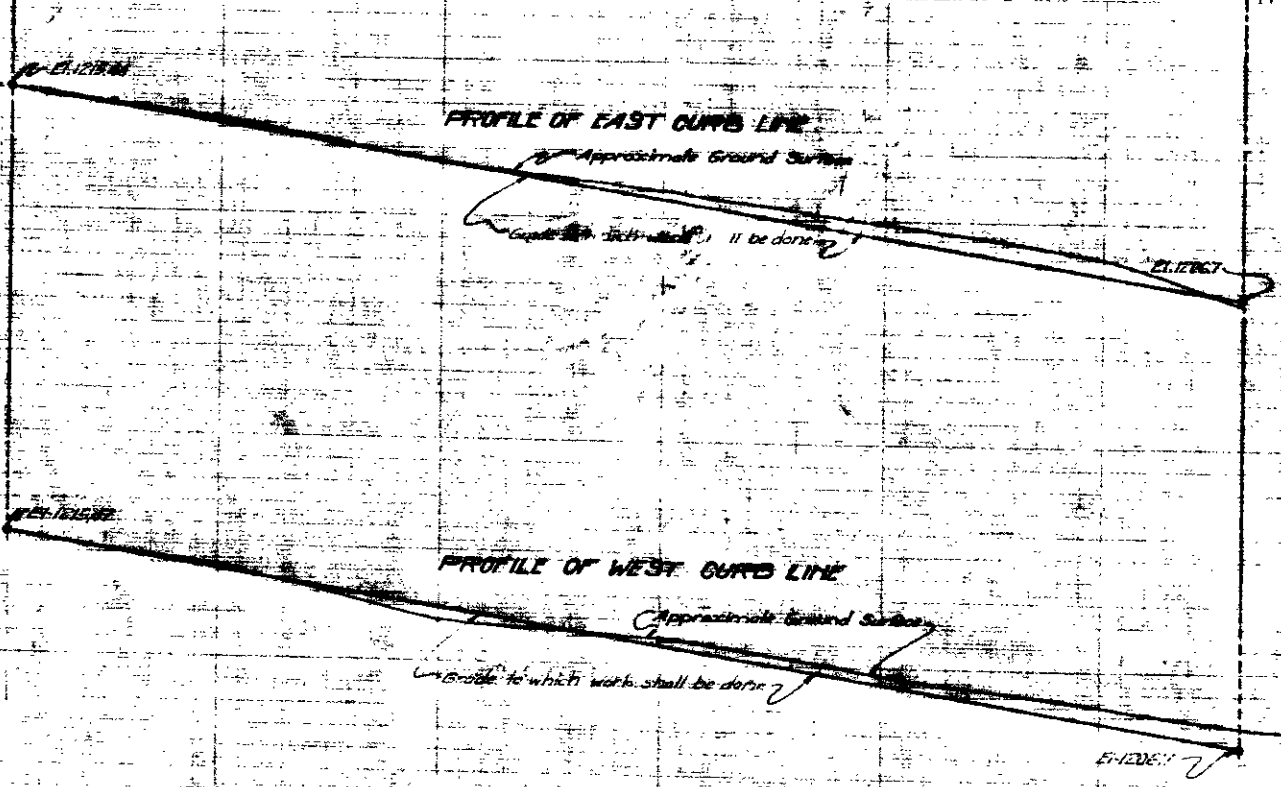
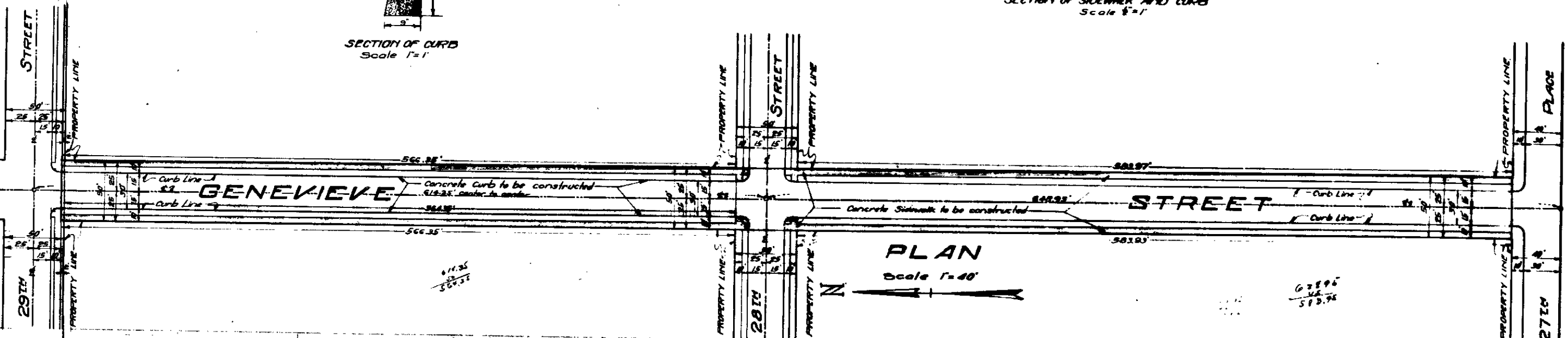
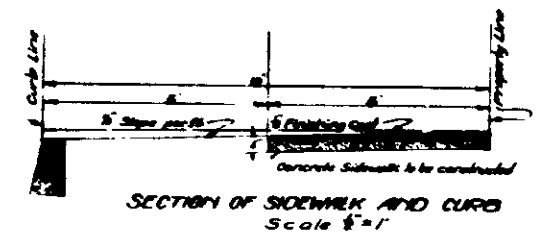
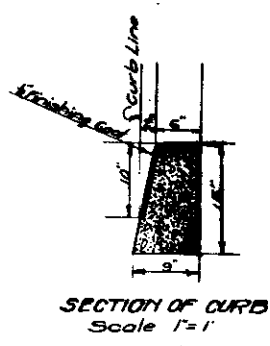


FOR CONCRETE  
**GENEVIEVE STREET**  
**28<sup>TH</sup> STREET**  
**EAST SIDE OF**  
**MOUNTAIN VIEW**  
 CITY OF SAN  
 OCTOBER 1920



See also  
 1207  
 1208  
 1209  
 1210  
 1211  
 1212  
 1213  
 1214  
 1215  
 1216  
 1217  
 1218  
 1219  
 1220

Title to 60  
 Dedications  
 in Book 2  
 Title to 60  
 by the Arr  
 Records of  
 Title to Mou  
 Records of

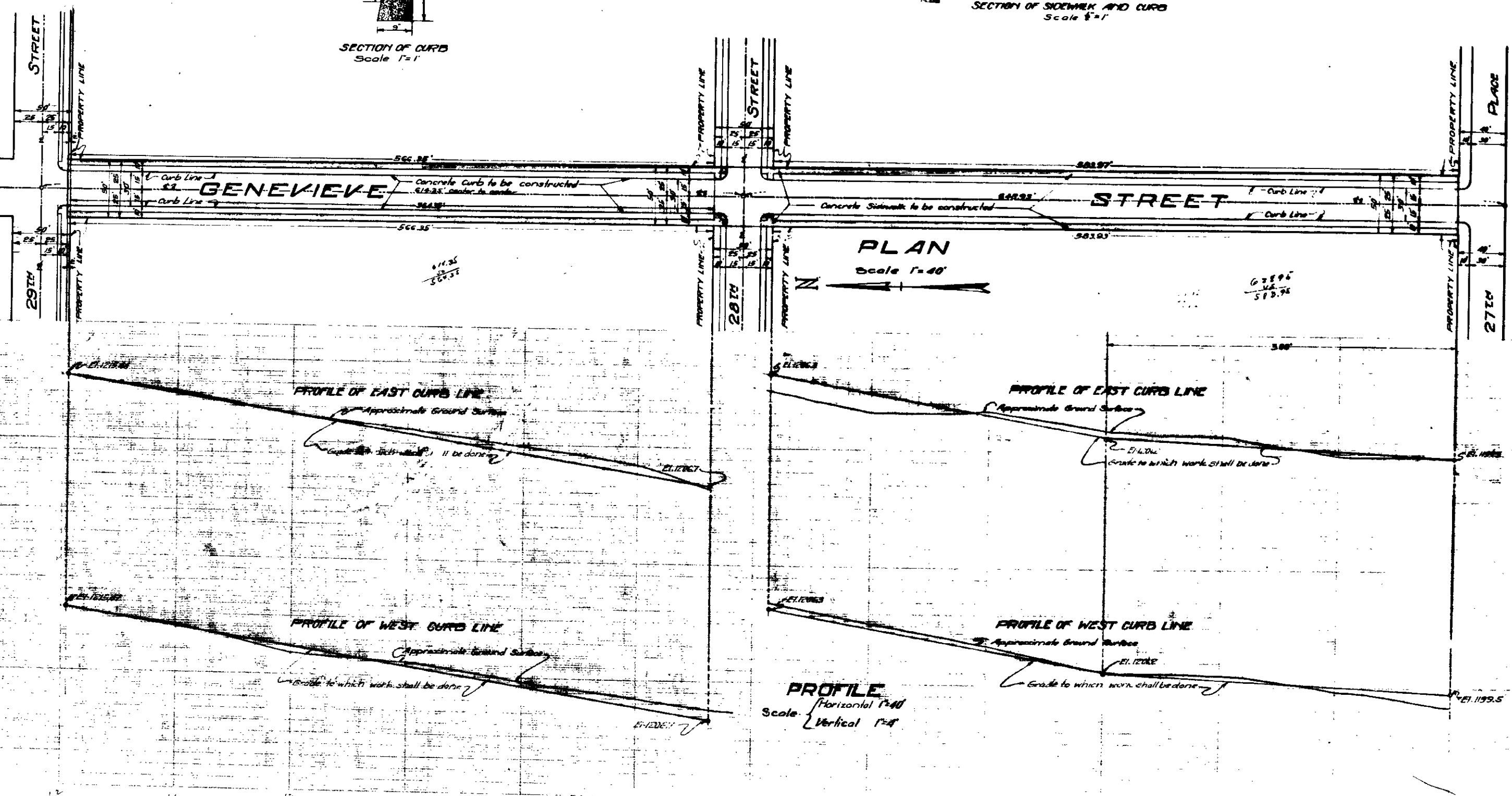
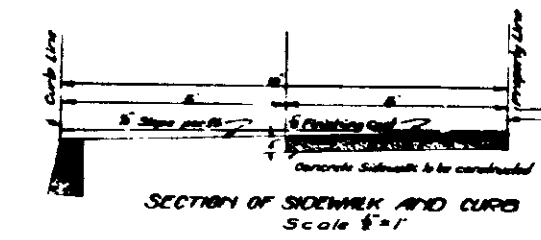
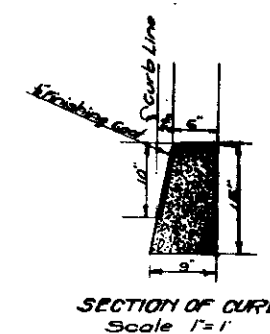
Grade of 18  
 Grade of 60  
 Grade of 22

Black line show  
 hid line show

Note:  
 All elev  
 in feet  
 is 104.3  
 as est  
 City of

Plan ado

FOR CONCRETE  
**GENEVIEVE ST.**  
**28<sup>TH</sup> STREET**  
 EAST SIDE OF  
**MOUNTAIN VIEW**  
 CITY OF SAN  
 OCTOBER 1920.



Car 78  
 1/2" 1/4"  
 El. 1195.5  
 1/4" 1/8"  
 3/8" 1/4"  
 Concrete  
 Concrete

Title to City  
 Dedication  
 in Book 2  
 Title to City  
 by the Arr.  
 Records of  
 Title to Mount.  
 Records of

Grade of M.  
 Grade of Gen.  
 Grade of 22.

Black line shows  
 red line shows

Note:  
 All elev.  
 in feet  
 is 104.3  
 as est.  
 City of

Plan ado